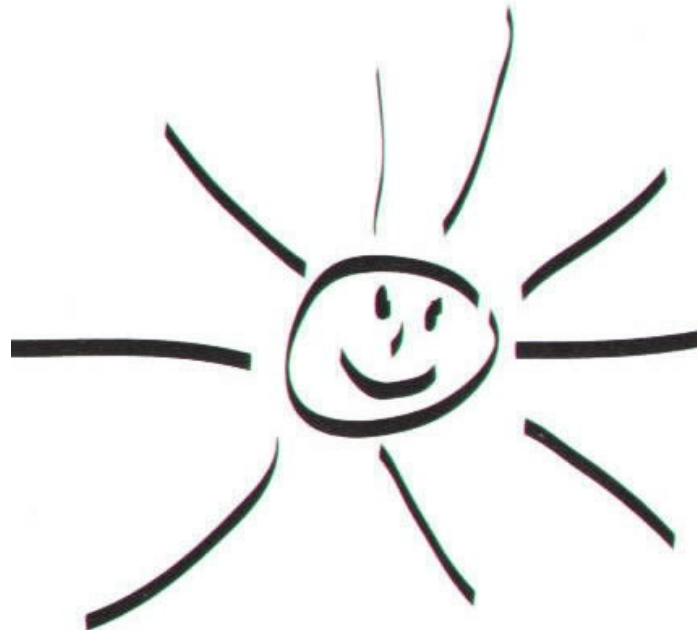


Congregation Kol Ami Religious School

Parent Handbook

5768-5769

2008-2009



Congregation Kol Ami

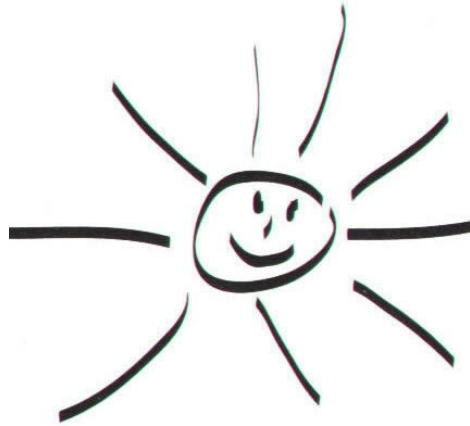
1200 North La Brea Avenue

West Hollywood, CA 90038

Phone: 323-606-0996

Fax: 323-606-0997

We celebrate the blessing of all of our families



Shalom!

As we gear up for the 2008/2009 school year we have created some new and exciting programs for our students that are introduced in this packet. Also included is a listing of policies and procedures for Congregation Kol Ami's Religious School students. These policies have been carefully and thoughtfully developed by a group of educators with many years of experience in the education of youngsters. We are confident that the items listed here will provide a safe and nurturing environment for your child's educational experience.

In advance we thank you for the time each parent will be taking in insuring that these policies and followed.

A handwritten signature in black ink, appearing to read "Rabbi Denise L. Eger". The signature is fluid and cursive.

Rabbi Denise L. Eger

A handwritten signature in black ink, appearing to read "Cassis Kirschbaum". The signature is fluid and cursive.

Cassis Kirschbaum, Principal

LOCATION

Unless otherwise noted Congregation Kol Ami Religious School Students will meet at our Temple - 1200 North La Brea Avenue at 9:30 a.m.

Our **Opening Session** on **September 14, 2008** will meet at **9:30 a.m.**

PARTICIPATION/PASSPORT TO JEWISH EDUCATION PROGRAM

Religious School begins **sharply** at 9:30 am and will dismiss at 12:00 noon. **Our worship service is not optional.** It is an integral part of our curriculum. **Please have your child at Temple on time.** There is also a mandatory class Shabbat where your child will lead a Friday night service with the Rabbi. With our new *Passport to Jewish Education Program* each child must attend a minimum of 18 sessions plus several Shabbat and holiday services and participate in community service projects. Each child will have a passport. Please provide a recent photo of your child with your registration materials. Each child must get a stamp of entry in his/her passport upon completion or attendance at each program. The passport will remain at Temple. Upon the successful completion of the requirements each child will be able to attend a special program to be announced later in the year.

TZEDAKAH

Please send Tzedakah money each week with your child. This is an important aspect of our religious school. The children will determine where their tzedakah funds will go. We suggest \$1.00 weekly.

IPODS, GAMEBOYS, BARBIES, SCOOTERS –ETC.

Please leave toys, games and scooters at home. These are a distraction for our children. Gum and candy are also not permitted.

ATTENDANCE

For your child to get the most out of his/her Religious School experience, please make every effort to attend regularly. If you know your child is going to be absent please call the Temple office in advance at **323.606.0996**. We know there will be times that your child will have to leave Religious School early. On these days, we ask that you send a note in to school informing us of his/her early release including the time he/she will be picked up and by whom. If someone other than you will pick up your child, please inform us **in writing**.

SNACK

Parents will be responsible for providing a healthy snack for their child's class on rotation. We are looking for room parents for each class that will help coordinate the schedule of snacks. Please note that cookies and cakes and not permitted.

ATTIRE/DRESS CODE

Many of our learning experiences during Sunday School and Play Group Preschool will involve hands-on projects. While we expect our kids to dress cleanly and comfortably, please do not send your child to religious school in clothing that would be inappropriate for the many art projects we will be undertaking.

SHABBAT

We encourage you to reinforce the important messages we teach by regular attendance at Shabbat Services. The first Friday of the month is especially designed for families with children. Services begin at 6:45 pm and conclude by 7:30 pm. Children are always welcome at any of our services. On all other Friday nights, services begin at 8 pm and continue to approximately 9:15 pm. Saturday morning worship is the first Saturday of each month at 10:00 am.

Once during the year your child's class will be leading an early service. This will be followed by a class Shabbat dinner. We expect your attendance and your child's attendance and cheerful participation.

Mission Statement for Congregation Kol Ami Religious School



The Religious School of Congregation Kol Ami is dedicated to the depth and breadth of Jewish Education. We believe that each child is a valued member of the Jewish community and should be introduced to the sacred texts of our tradition and the timeless language that unites us as a People. Our school is committed to the idea of fostering faith in God, Torah and the People of Israel. As a community and congregation we value Jewish literacy and want our children to be at home amid the diversity of the Jewish community, whether in Los Angeles or in Israel and beyond

We value the Torah's teaching that we are all created *B'tzelem Elohim*, in God's image. We are committed to celebrating the diversity of our families, and welcome children in our school from families with lesbian, gay, and heterosexual parents, as well as from interfaith and Jewish families.

Our school creates a fun, positive, encouraging and nurturing environment in which your child may learn and grow in an atmosphere that encompasses a variety of learning styles and tools.

For Religious School we intend:

To help our children find the beauty and joys of Jewish life and the strength of Jewish knowledge through *tefillah* (prayer and reflection), *mitzvot* (actions) and *tzedakah* (charity).

To provide age-appropriate learning that uses methods, books and materials that are contemporary and subject matter that is relevant to American Jewish children.

To promote self-exploration that encourages free thinking in confronting the complexities of our heritage.

To convey the importance of social justice as it affects our society at large, our community in particular, the individual and as a deep expression of our Jewish spirituality.

To encourage and support the incorporation of Jewish life and practice into your home by bring parents into the classroom.

Mission Statement of Congregation Kol Ami

To be a progressive, Reform congregation rooted in a rich Jewish tradition, with a commitment to social justice, Israel and diversity that guides us in the present and transforms our future.

The Vision of Congregation Kol Ami

To be a welcoming and nurturing environment for Jews of diverse backgrounds and lives seeking enhanced Jewish observance, worship, spirituality, appreciation and celebration

To be a vital link between our rich Jewish history and tradition while using our experience and insights to innovatively shape our Jewish future.

To be a community engaged in Jewish experience culture, social activity, education and social action that incorporates rich Jewish history, Jewish tradition, feminist Jewish theology, gender equality, and diverse sexual identities in its theology and practice.

To be a voice of conscience, reason and compassion which creates a link between our spirituality and our commitment to social justice.